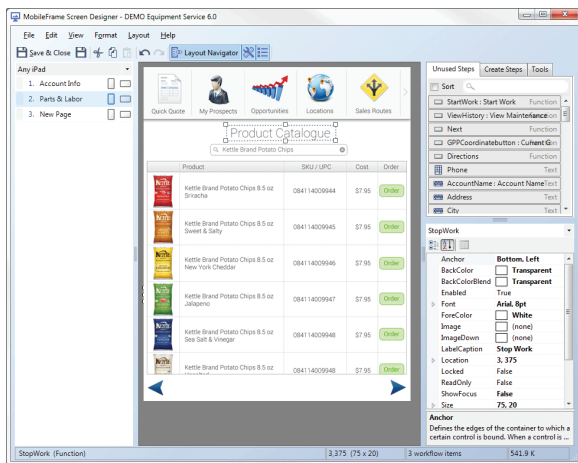


Mobile Application Development Platform

The only mobile app development platform designed specifically for the enterprise.



Code-free & customized to your business processes

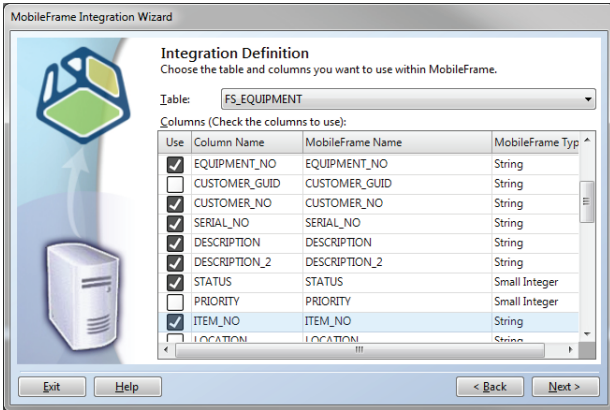
MobileFrame is the only code-free mobile app development platform, allowing businesses to:

- ✓ Design, develop, test and deploy mobile apps specifically tailored to your business process in a fraction of the time required by other tools
- ✓ Avoid the hassle and expense of maintaining complex code-bases and smoothly transition projects to new staff
- ✓ Design unique UI experiences for every platform while maintaining consistent business logic throughout
- ✓ Integrate to any backend systems quickly and easily

Cross-platform: iOS, Android, Windows & the Web

Write once, deploy anywhere:

- ✓ Build native apps for any iOS, Android, or Windows-based device or choose from our library of ready-to-run solutions to get a head start
- ✓ Create feature-rich web apps & portals for customers, partners, & employees that work consistently on any HTML 4 / 5 compliant browser
- ✓ Deploy a single app that looks, feels, and operates consistently across all platforms, both native and web-based



Integrations simplified

With most mobility projects, integrating to backend systems is a hassle. With our integration wizard, simply provide the appropriate credentials then use our point & click interface to map out the desired fields and let MobileFrame handle the complexities automatically.

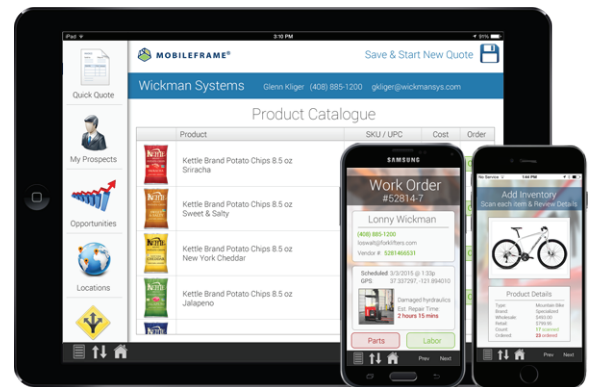
We have hundreds of customers successfully integrated with:

- ✓ Quickbooks ✓ SAP R3 & Business 1 ✓ JD Edwards ✓ Salesforce.com ✓ Oracle
- ✓ DB2 ✓ Sharepoint ✓ People Soft ERP ✓ Microsoft Dynamics (Navision)
- ✓ Great Plains ✓ Timberline ✓ MS Access ✓ Silk ✓ DIS ✓ Carrier Logistics
- ✓ Archibus ✓ Macola ✓ & more

The only MADP that is purpose-built for enterprise apps

While many vendors offer mobile "add-ons" or "extensions" (with limited configurability) for their backend systems, MobileFrame was designed specifically for mobility. Our platform includes:

- ✓ App development ✓ Enterprise-class synchronization of data
- ✓ Military-grade security ✓ Cross-platform deployment ✓ Lifecycle support
- ✓ Mobile device management ✓ Integrations ✓ Deployment management
- ✓ GPS tracking ✓ Globalization/localization ✓ Simulation & debugging
- ✓ Database management ✓ Automatic updates & version control
- ✓ Backwards compatibility ✓ & more

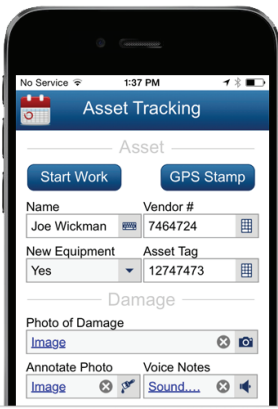


Always available, even without network connectivity

Business shouldn't grind to a halt when a mobile worker loses reception. When you're implementing a mobile solution, the top priority is ensuring that your users can actually access it. After all, what good is a mobile solution if your staff can't even use it?

Apps built with our mobility platform include a truly native, disconnected client database so users can work even without network connectivity. When they regain connectivity, the system automatically syncs back any offline changes and gets updated information as well.





Mobile device management built-in

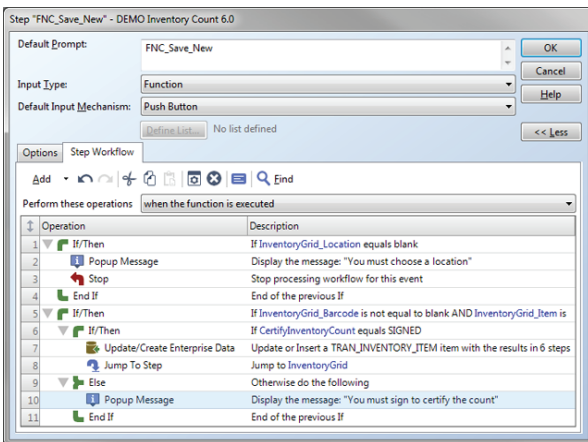
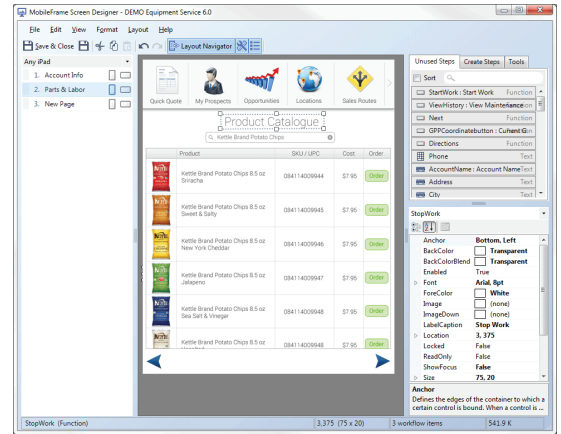
Our mobility platform includes MDM features such as resetting the client database, logging off a user, triggering synchronization, etc. Admins can remotely monitor device statistics including battery life, location, memory utilization, synchronization status & more. Set rule-based actions, geo-fencing boundaries, restrict app usage, and more.

Our MDM capabilities support both BYOD and enterprise-owned mobility programs. We also integrate seamlessly with any existing enterprise mobility management solution such as AirWatch and Citrix XenMobile.

Pixel Perfect Screen Designs

Many solutions allow only limited configuration, forcing you to modify your business processes to fit their system. Our mobile app development platform allows you to build (or buy) mobile apps that fit your needs:

- ✓ Code-free GUI-based design allows you to easily build custom apps
- ✓ Create consistent or unique user experiences for every OS while maintaining consistent business logic throughout
- ✓ Build pixel perfect graphically-rich UI that scales automatically across multiple form factors
- ✓ Implement rich-data functionality (ex: photo/voice/signature capture, barcode scans, etc) with a single click
- ✓ Easily create apps that support multiple languages (ex: English, French, Spanish, etc) without changing your business logic



Easily create complex app logic suited to your business process

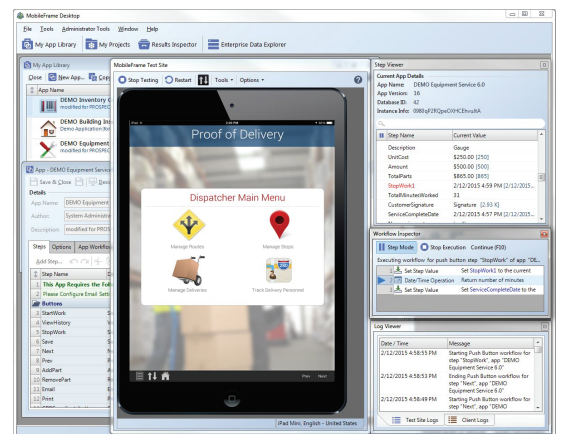
MobileFrame's platform uses an intuitive visual approach to building complex app workflows:

- ✓ Workflow is code-free and descriptive so you won't need to waste time reviewing code to figure out what it does and why
- ✓ Easily build & depict sophisticated conditionals and branching
- ✓ App logic is created & organized visually so you can see exactly what is happening and when
- ✓ Completely control the business logic... not just a few minor configuration options

Simulate and debug, then deploy

Our mobile app development platform includes a testing suite with integrated diagnostics and debugging that simulates a live deployment:

- ✓ Easily simulate any device without the hassle of distributing native binaries
- ✓ Test layouts and design features & examine both client and server-side logic, data-flow, and synchronization.
- ✓ Step through app logic to ensure everything is working exactly as you expected, and observe in-app changes as logic occurs.
- ✓ Optimize performance by quickly identifying bottlenecks and other performance issues.
- ✓ Quickly deploy live apps and data to actual devices for real-world testing



Enterprise-class data & synchronization

MobileFrame's supports anything from simple systems with minimal data to sophisticated systems with millions of records per device.

- ✓ Truly native disconnected client database so users can work even without network connectivity, encrypted & secure.
- ✓ Robust database options including support for rich data types, indexes, automatic keys, SQL queries, etc. Automatic schema mirroring between server & client DB's.
- ✓ Automatic background synchronization including continuous delta synchronization of dataset changes to clients. Sophisticated data management & distribution features.

Military-grade security end-to-end

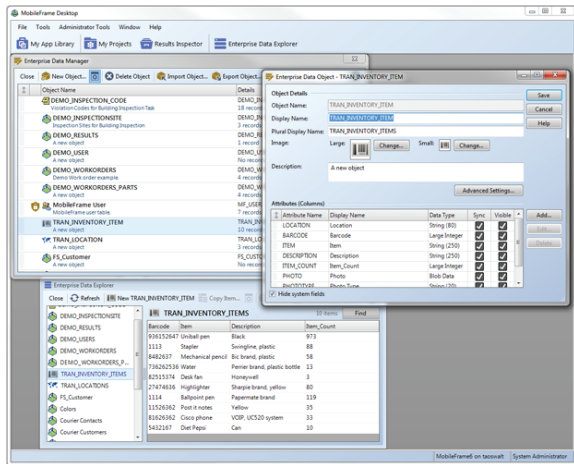
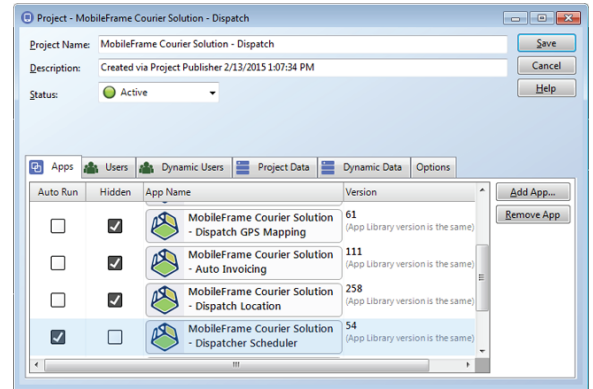
When you are putting valuable data on a mobile device in the field, you need to ensure it's protected:

- ✓ Full FIPS (140-2 or better) compliant encryption of all files on the device, including the database. All client-server communications are encrypted.
- ✓ Invisible two-factor authentication (patent pending), optional secondary authorization for registration to your servers, and SSL support to double-encrypt client-server communications.
- ✓ User authentication via encrypted password or via Active Directory/LDAP, automatic logoff of inactive users, remote DB wipe and device lockout, & much more

Project & deployment administration

MobileFrame has comprehensive project & deployment administration built-in. Control which apps a user can access and what data they receive, ensuring that you deploy the right data to the right person at the right time.

Utilize sophisticated scheduling, dynamic user assignment, GPS tracking, status monitoring & more to streamline project management.



Database development & management

Even experienced developers often struggle with implementing the best database schema to store their data. With our data management tools, even novice users can easily manage their MobileFrame database without the need to write any queries or understand the complexities of relational database management systems.

MobileFrame works with any enterprise database including SQL, Oracle, DB2, etc

Additional Features

When we say our mobility platform is full-featured, it isn't just rhetoric. We have so many features, we'd have to write a novel to describe them all. We've shortlisted some additional functionality below, but please contact us for more information.

- ✓ GPS tracking & mapping of personnel, assets, etc.
- ✓ Fully integrated lifecycle support
- ✓ Extensible architecture & robust API for custom functionality
- ✓ Built on open standards
- ✓ Worry-free updates and backwards compatibility
- ✓ Hassle-free globalization, internationalization, localization
- ✓ Intelligent rendering ensures apps look flawless on any device
- ✓ Flexible / scalable servers to accommodate growth